

2008 p. 13  
**Remodeling  
Planner**  
Your interactive  
project guide

See our fabulous  
backyard Makeover of  
the Month  
p.26

**Remodeling**  
Saving for spruce-ups

**20**

**Outdoor & Landscape**  
Green exterior lighting

**22**



# homefront

## Expert Tips, News and Happenings from Baltimore's Home Improvement Community

COMPILED BY CYD HAYNES

### Maryland Home & Garden Show

Friday through Sunday, Oct. 17-19, the Maryland State Fairgrounds in Timonium will host the **Maryland Home & Garden Show**. This year, the show will “go green” with the latest environmentally friendly trends and techniques in home improvement, interior design, lawn care and recreation. Highlights of the show include presentations by **Jim Parks**, host of HGTV's *New Spaces*, six professionally landscaped gardens and thousands of products for the home from more than 600 exhibitors. The show will run from 10 a.m.-9 p.m. Friday and Saturday and 10 a.m.-6 p.m. Sunday. Tickets are \$9 for adults, \$6 for seniors and \$3 for children ages 6-12 (children under 6 are admitted at no cost). For more information, call (410) 863-1180 or visit [www.mdhomeandgarden.com](http://www.mdhomeandgarden.com).



### New Baltimore NARI Chapter

Attention Baltimore remodelers! The new **Greater Baltimore NARI (National Association of the Remodeling Industry)** chapter will be hosting their first general membership meeting on Wednesday, Sept. 24. Special guest speaker, National NARI President **Renee Rewiski**, will be offering a “State of the Remodeling Industry” address and an update on new legislation for remodeling with lead. This event is open to trade professionals only. For more information, email [NARI@BaltimoreRemodels.com](mailto:NARI@BaltimoreRemodels.com) or call (301) 758-4617.



### NARI and HI Go Green

*Home Improvement* magazine has been named the Official Green Consumer Publication of the **National Association of the Remodeling Industry (NARI)**. This national designation will mean *Home Improvement* readers will have connections to the latest green home-improvement information and to a reliable source to find green certified professionals through NARI. For more information, visit [www.nari.org](http://www.nari.org) or [www.homeimprovementmag.com](http://www.homeimprovementmag.com).



**Donald Lynch, Jr.** of **Lynch Construction Inc.** in Churchville has been awarded Certified Aging-In-Place Specialist (CAPS) designation by the **National Association of Home Builders' (NAHB) Remodelers Council**. This certification identifies Lynch as one of a select few in the nationwide building industry possessing skills and knowledge specific to making home modifications for aging in place. Lynch Construction Inc. is a family-owned, Maryland business that has provided residential and commercial remodeling in and around the Harford and Baltimore County areas and in the city of Baltimore since the company's founding in 1958 by **Donald F. Lynch, Sr.** **Editorial Resources begin on page 25.**

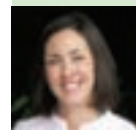


### Expert Q&A

**Q:** I just moved into a new home—the walls are bare, white and in desperate need of decoration. I'm afraid of spending money on paint and decor, only to find myself wanting a different look in a few months. Any advice?

**A:** Find what you love and follow these guidelines, and you should have a long-lasting, homey environment in no time:

- Your ceiling is your fifth wall—consider painting it a color aside from white. Painting a high ceiling a shade darker than or the same color as your walls will make the ceiling feel lower. If you paint it a shade lighter than your walls, it will feel higher.
- You don't have to place art on every wall. Start by placing art on your focal wall, then work around the room, leaving some bare areas for your eyes to rest.
- If you are doing a wall full of smaller pictures, it's nice to keep something similar among them—frame color, size, mat color or image tone (black and white or sepia tone).



—April Force Pardoe, interior decorator, AFP Interiors, serving the Baltimore metropolitan area